

17

A

B

C

15

1

18

23

22

280
279
278
277
276
275
274
273
272
271
270
269
268
267

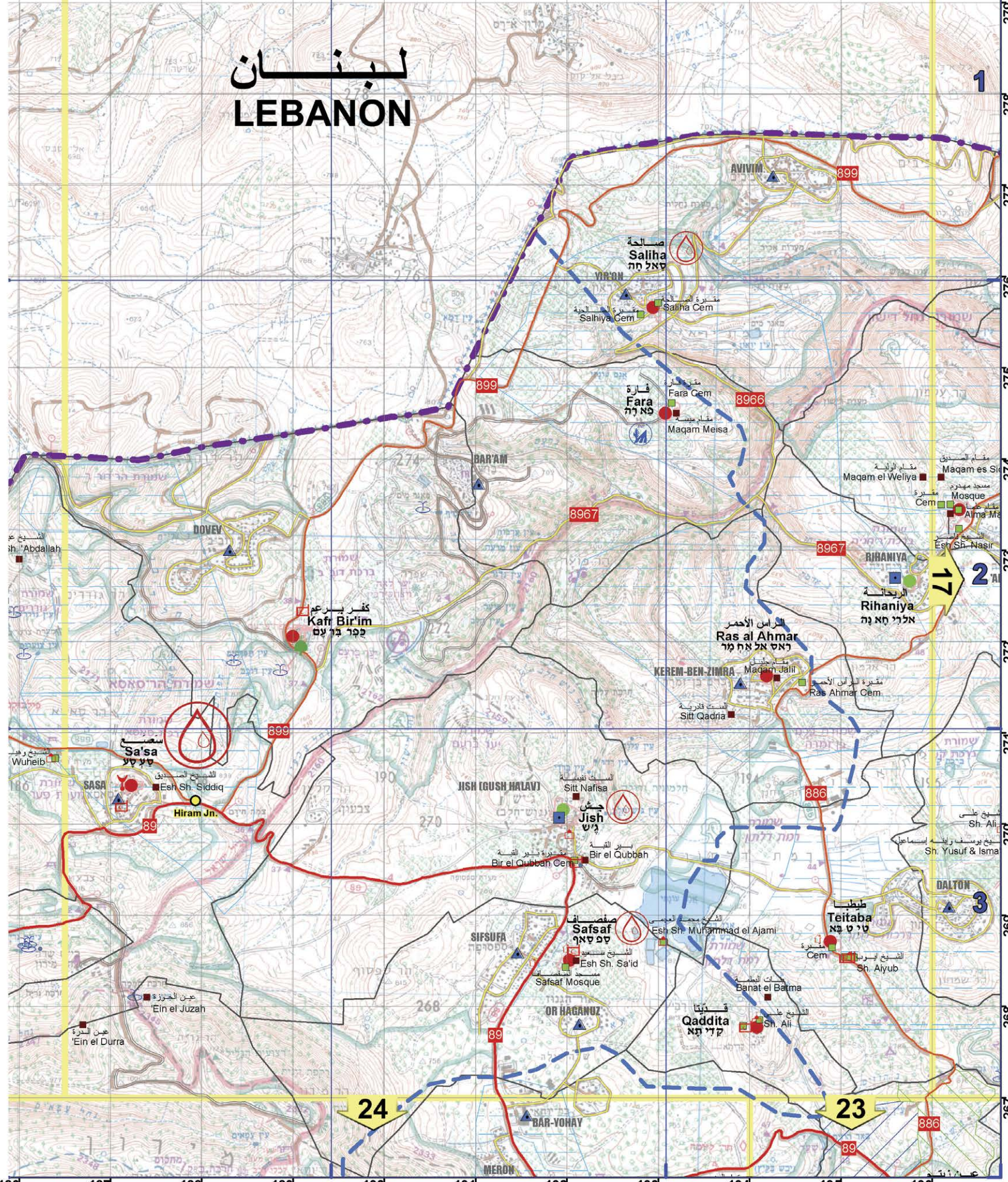
196 197 198 199 200 201 202 203 204 205 206

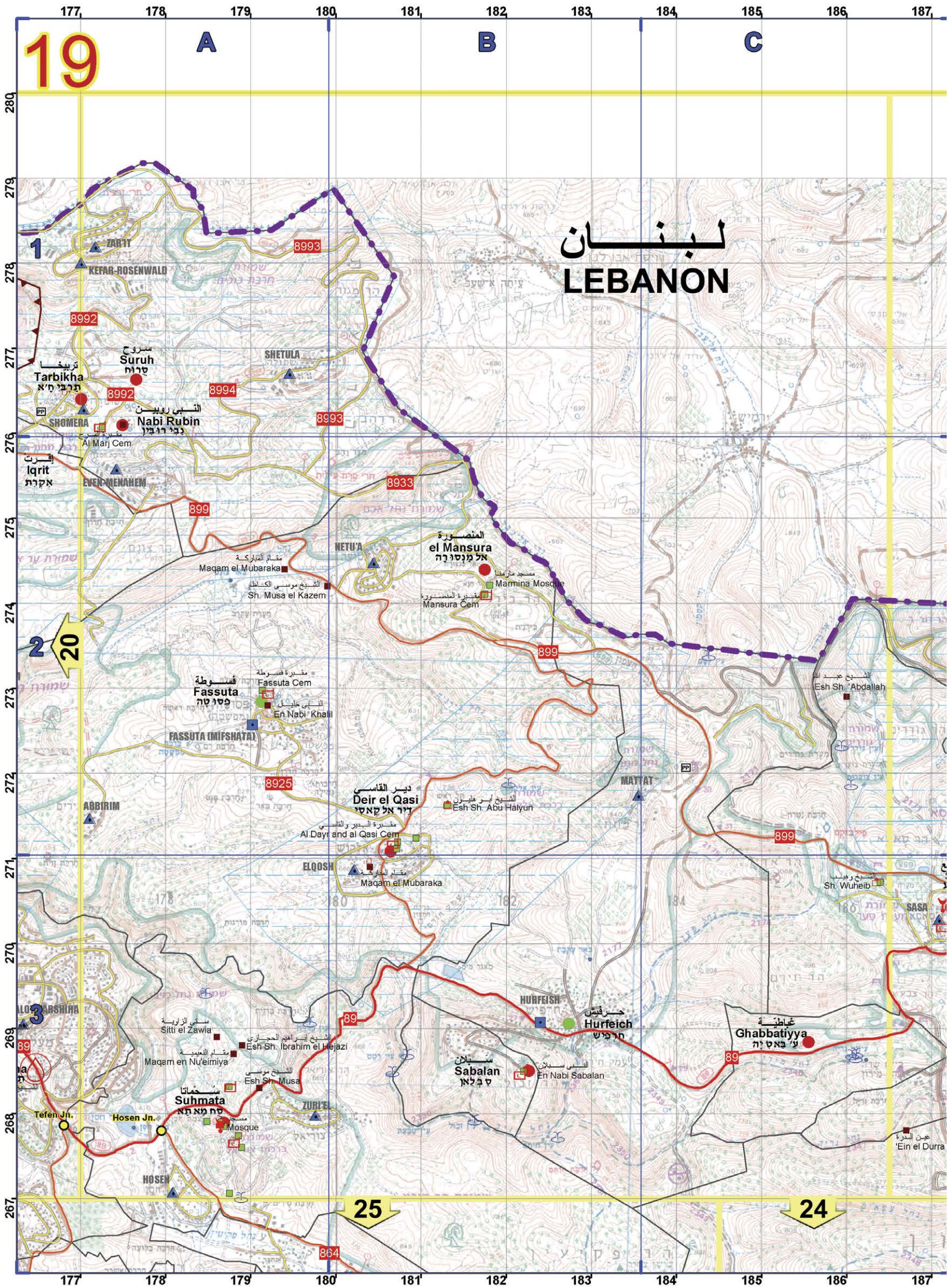
Qadas Cem
Majnunah Cem
Yesha Jn.
Umm en Nabi Yusha
en Nabi Yusha
RAMOT-NAFTALI
Beisamun
al Mallaha
Harrawi
QEREN
Arab Zubeid
el Ulmaniya
Deishum
DISHON
Alma Maqam
Rihaniya
Esh Sh. Muhammad el Qeisouni
Jazayir el Hindaj
Marus
Mughr ed Druz
Dalata
Muhammad al Nattan Maqam
Ammuqa
Qabba'a
Haisor
Weiziya
Mahana'im Jn.
Mahanayim

المالكية
Qadas
Yesha
Umm en Nabi Yusha
en Nabi Yusha
Beisamun
الملاحه
Harrawi
Arab Zubeid
العمانية
Deishum
DISHON
Alma
Rihaniya
Esh Sh. Muhammad el Qeisouni
Jazayir el Hindaj
Marus
Mughr ed Druz
Dalata
Muhammad al Nattan Maqam
Ammuqa
قباعة / كباة
Qabba'a
Haisor
Weiziya
Mahana'im Jn.
Mahanayim

مسجد المالكية
Malkiya Mosque
مقبرة الشيخ العجمي
Sh. Ajami
مقبرة المالكية
Malkiya Cem
مقبرة + مقام الملاحه
Al Mallaha Cem + Maqam
مقبرة العرب الزبيدي
Arab Zubeid Cem
مقبرة العمانية
Almaniya Cem
مقبرة الشيخ محمد العماني
Esh Sh. Muhammad el 'Ulmaniya
عين العمانية
'Ein el 'Almaniya
مقبرة السيد
Maqam es Siddiq
مسجد مهدي
Mosque
مقبرة
Cem
مقبرة السيد
Esh Sh. Nasir
مقبرة السيد محمد القيسوني
Esh Sh. Muhammad el Qeisouni
مقبرة الدروز
Mughr ed Druz Cem
مقبرة علي
Sh. Ali
مقبرة يوسف وإسماعيل
Sh. Yusuf & Isma'il
مقبرة أبو إسحاق
Abu Ismail Al Ajami Maqam
الست قدريا
Sitt Qadria
مقبرة أبو سعد المصيري
Esh Sh. Abu Sa'd ed Dhareer
مقبرة الشيخ محمد العجمي
Sh. Muhammad el Ajami
مقبرة حرب
Esh Sh. Harb
مقبرة (مقام)
'Ein Maqlad (maqam)
مقبرة قباة
Qubba'a Cem
مسجد قباة
Qubba'a Mosque
مقبرة بنيت
Esh Sh. Banit
مقبرة بيشر
Esh Sh. Bishr

לבנון LEBANON





لبنان
LEBANON

20

25

24



لبنان LEBANON

20

A

B

C

280
279
278
277
276
275
274
273
272
271
270
269
268
267

167
168
169
170
171
172
173
174
175
176
177

26

25

19

2

3

167 168 169 170 171 172 173 174 175 176 177

158 159 160 161 162 163 164 165 166 167 168

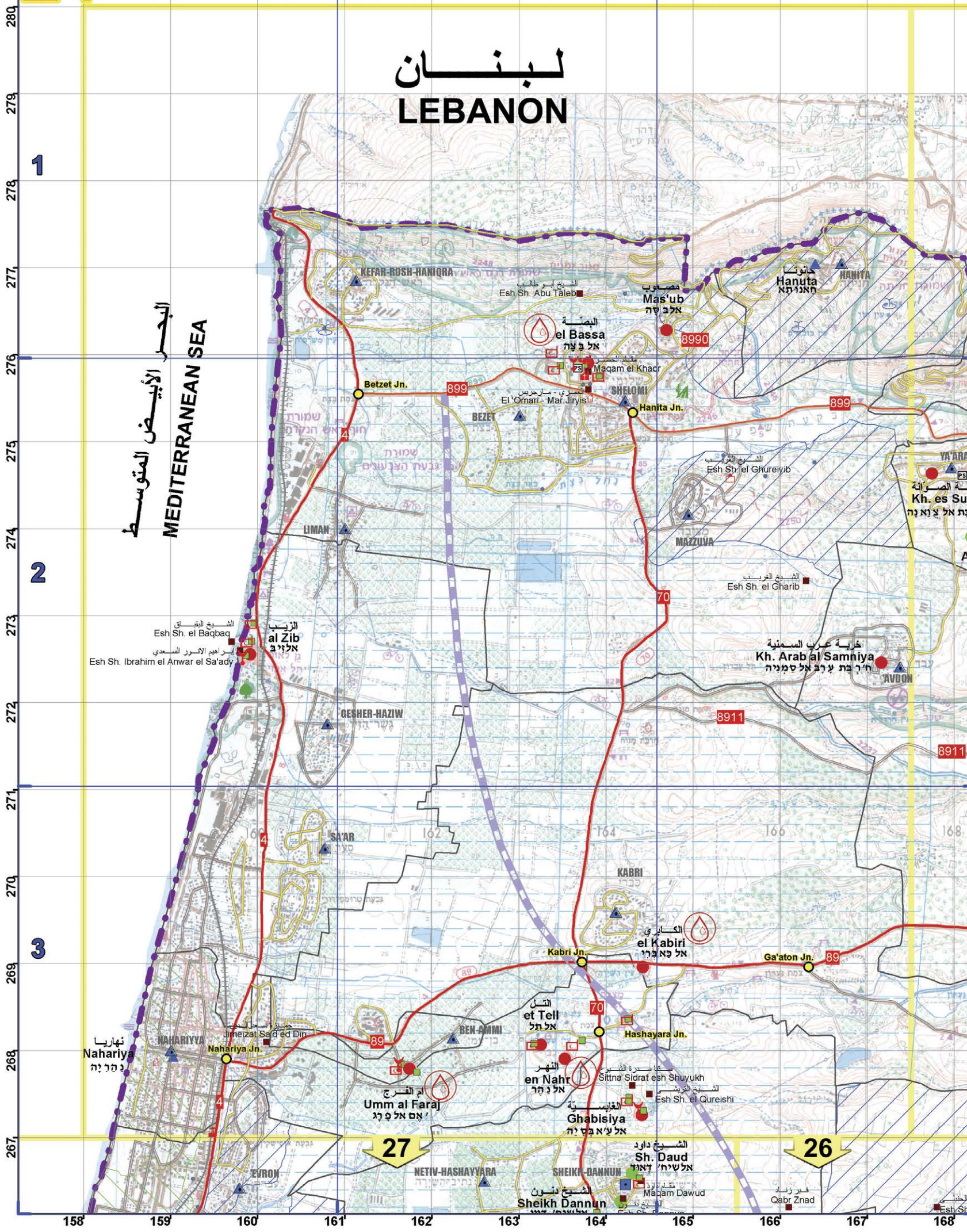
21

A

B

C

لبنان LEBANON



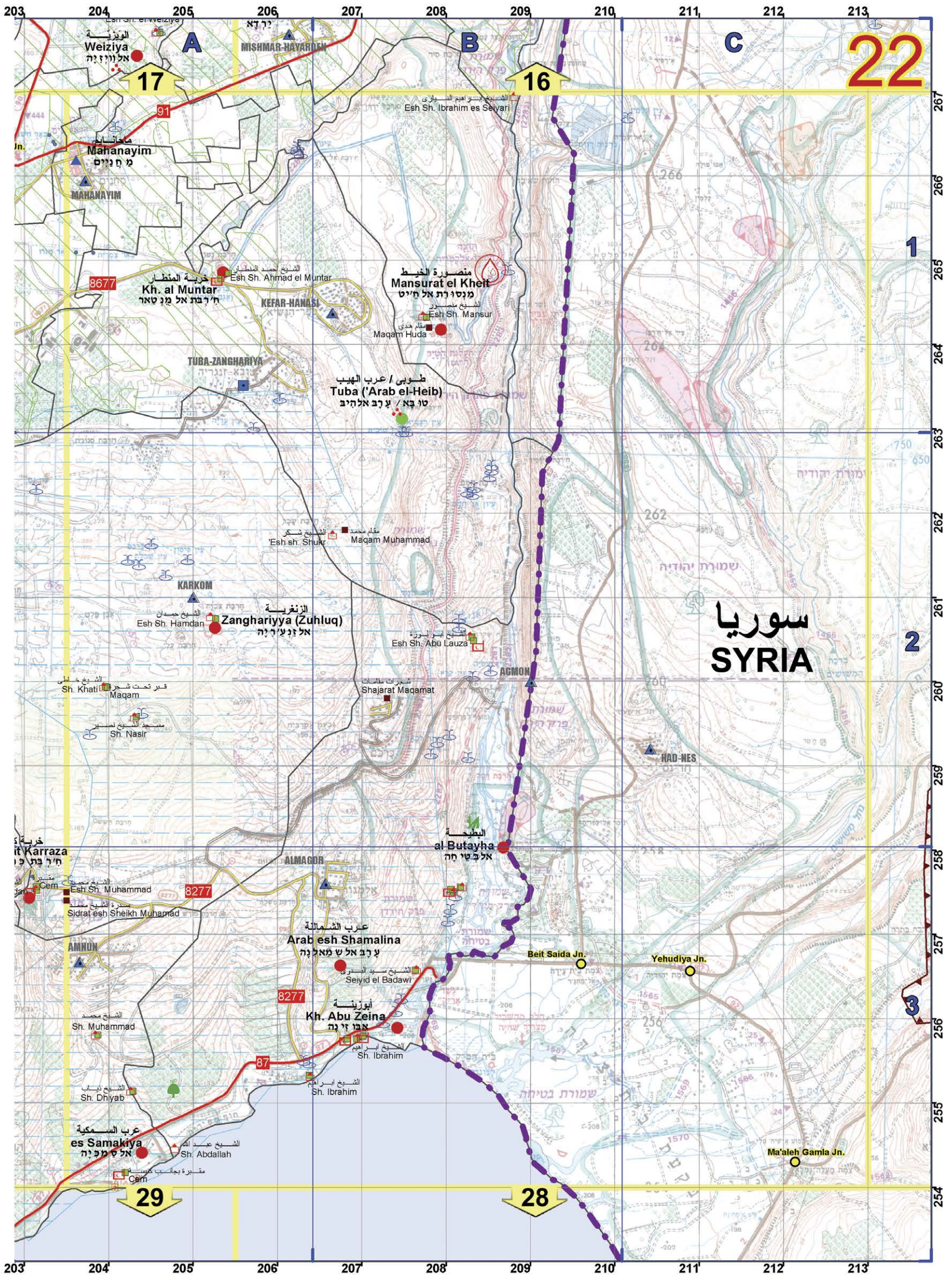
البحر الأبيض المتوسط
MEDITERRANEAN SEA

1

2

3

158 159 160 161 162 163 164 165 166 167 168



22

سوريا
SYRIA

17

16

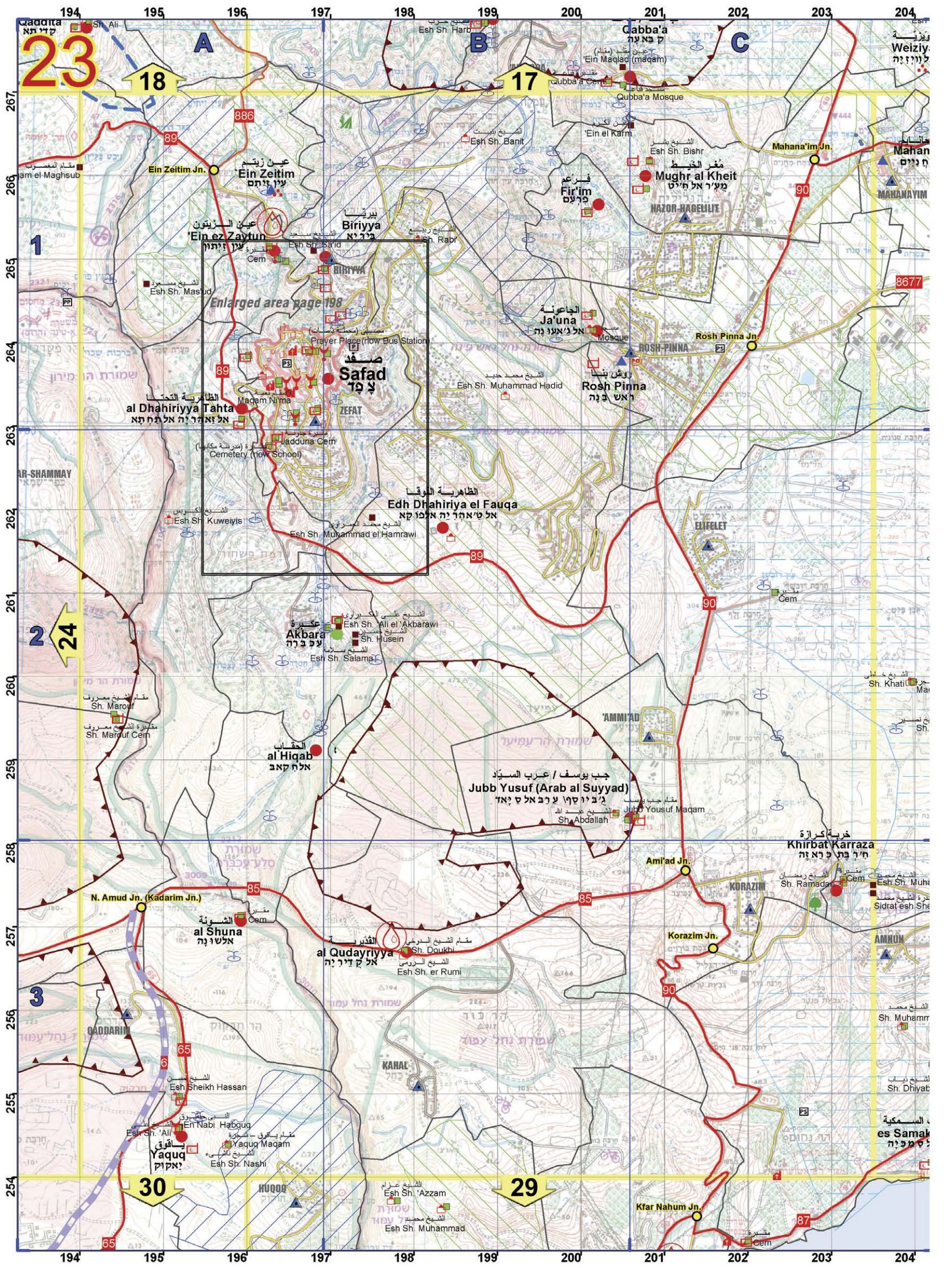
29

28

1

2

3



23

18

17

24

30

29

Enlarged area page 198

Safad

al Dhahiriyya Tahta

Jadduna Cem

Esh Sh. Muhammad el Hamrawi

Esh Sh. Kuweiyis

Esh Sh. Marouf

Esh Sh. Marouf Cem

al Shuna

al Qudayriyya

Esh Sh. er Rumi

Esh Sh. Hassan

Esh Sh. 'Ali

Esh Sh. 'Ali

Esh Sh. 'Ali

Esh Sh. 'Ali

Esh Sh. 'Ali

Esh Sh. 'Ali

Esh Sh. 'Ali

Esh Sh. 'Ali

Esh Sh. 'Ali

Esh Sh. 'Ali

Esh Sh. 'Ali

Esh Sh. 'Ali

Biriyya

Esh Sh. Mas'ud

Esh Sh. Muhammad Hadid

Esh Sh. Ali el Akbarawi

Esh Sh. Husein

Esh Sh. Salama

Esh Sh. 'Ali el Akbarawi

Esh Sh. Husein

Esh Sh. Salama

Esh Sh. 'Ali el Akbarawi

Esh Sh. Husein

Esh Sh. Salama

Esh Sh. 'Ali el Akbarawi

Esh Sh. Husein

Esh Sh. Salama

Esh Sh. 'Ali el Akbarawi

Esh Sh. Husein

Esh Sh. Salama

Esh Sh. 'Ali el Akbarawi

Esh Sh. Husein

Esh Sh. Salama

Esh Sh. 'Ali el Akbarawi

Esh Sh. Husein

Rosh Pinna

Esh Sh. Muhammad Hadid

Esh Sh. Ali el Akbarawi

Esh Sh. Husein

Esh Sh. Salama

Esh Sh. 'Ali el Akbarawi

Esh Sh. Husein

Esh Sh. Salama

Esh Sh. 'Ali el Akbarawi

Esh Sh. Husein

Esh Sh. Salama

Esh Sh. 'Ali el Akbarawi

Esh Sh. Husein

Esh Sh. Salama

Esh Sh. 'Ali el Akbarawi

Esh Sh. Husein

Esh Sh. Salama

Esh Sh. 'Ali el Akbarawi

Esh Sh. Husein

Esh Sh. Salama

Esh Sh. 'Ali el Akbarawi

Esh Sh. Husein

Esh Sh. Salama

Jubb Yusuf (Arab al Suyyad)

Esh Sh. Muhammad Hadid

Esh Sh. Ali el Akbarawi

Esh Sh. Husein

Esh Sh. Salama

Esh Sh. 'Ali el Akbarawi

Esh Sh. Husein

Esh Sh. Salama

Esh Sh. 'Ali el Akbarawi

Esh Sh. Husein

Esh Sh. Salama

Esh Sh. 'Ali el Akbarawi

Esh Sh. Husein

Esh Sh. Salama

Esh Sh. 'Ali el Akbarawi

Esh Sh. Husein

Esh Sh. Salama

Esh Sh. 'Ali el Akbarawi

Esh Sh. Husein

Esh Sh. Salama

Esh Sh. 'Ali el Akbarawi

Esh Sh. Husein

Esh Sh. Salama

Rosh Pinna

Esh Sh. Muhammad Hadid

Esh Sh. Ali el Akbarawi

Esh Sh. Husein

Esh Sh. Salama

Esh Sh. 'Ali el Akbarawi

Esh Sh. Husein

Esh Sh. Salama

Esh Sh. 'Ali el Akbarawi

Esh Sh. Husein

Esh Sh. Salama

Esh Sh. 'Ali el Akbarawi

Esh Sh. Husein

Esh Sh. Salama

Esh Sh. 'Ali el Akbarawi

Esh Sh. Husein

Esh Sh. Salama

Esh Sh. 'Ali el Akbarawi

Esh Sh. Husein

Esh Sh. Salama

Esh Sh. 'Ali el Akbarawi

Esh Sh. Husein

Esh Sh. Salama

Ami'ad Jn.

Esh Sh. Muhammad Hadid

Esh Sh. Ali el Akbarawi

Esh Sh. Husein

Esh Sh. Salama

Esh Sh. 'Ali el Akbarawi

Esh Sh. Husein

Esh Sh. Salama

Esh Sh. 'Ali el Akbarawi

Esh Sh. Husein

Esh Sh. Salama

Esh Sh. 'Ali el Akbarawi

Esh Sh. Husein

Esh Sh. Salama

Esh Sh. 'Ali el Akbarawi

Esh Sh. Husein

Esh Sh. Salama

Esh Sh. 'Ali el Akbarawi

Esh Sh. Husein

Esh Sh. Salama

Esh Sh. 'Ali el Akbarawi

Esh Sh. Husein

Esh Sh. Salama

Korazim Jn.

Esh Sh. Muhammad Hadid

Esh Sh. Ali el Akbarawi

Esh Sh. Husein

Esh Sh. Salama

Esh Sh. 'Ali el Akbarawi

Esh Sh. Husein

Esh Sh. Salama

Esh Sh. 'Ali el Akbarawi

Esh Sh. Husein

Esh Sh. Salama

Esh Sh. 'Ali el Akbarawi

Esh Sh. Husein

Esh Sh. Salama

Esh Sh. 'Ali el Akbarawi

Esh Sh. Husein

Esh Sh. Salama

Esh Sh. 'Ali el Akbarawi

Esh Sh. Husein

Esh Sh. Salama

Esh Sh. 'Ali el Akbarawi

Esh Sh. Husein

Esh Sh. Salama

Amnun

Esh Sh. Muhammad Hadid

Esh Sh. Ali el Akbarawi

Esh Sh. Husein

Esh Sh. Salama

Esh Sh. 'Ali el Akbarawi

Esh Sh. Husein

Esh Sh. Salama

Esh Sh. 'Ali el Akbarawi

Esh Sh. Husein

Esh Sh. Salama

Esh Sh. 'Ali el Akbarawi

Esh Sh. Husein

Esh Sh. Salama

Esh Sh. 'Ali el Akbarawi

Esh Sh. Husein

Esh Sh. Salama

Esh Sh. 'Ali el Akbarawi

Esh Sh. Husein

Esh Sh. Salama

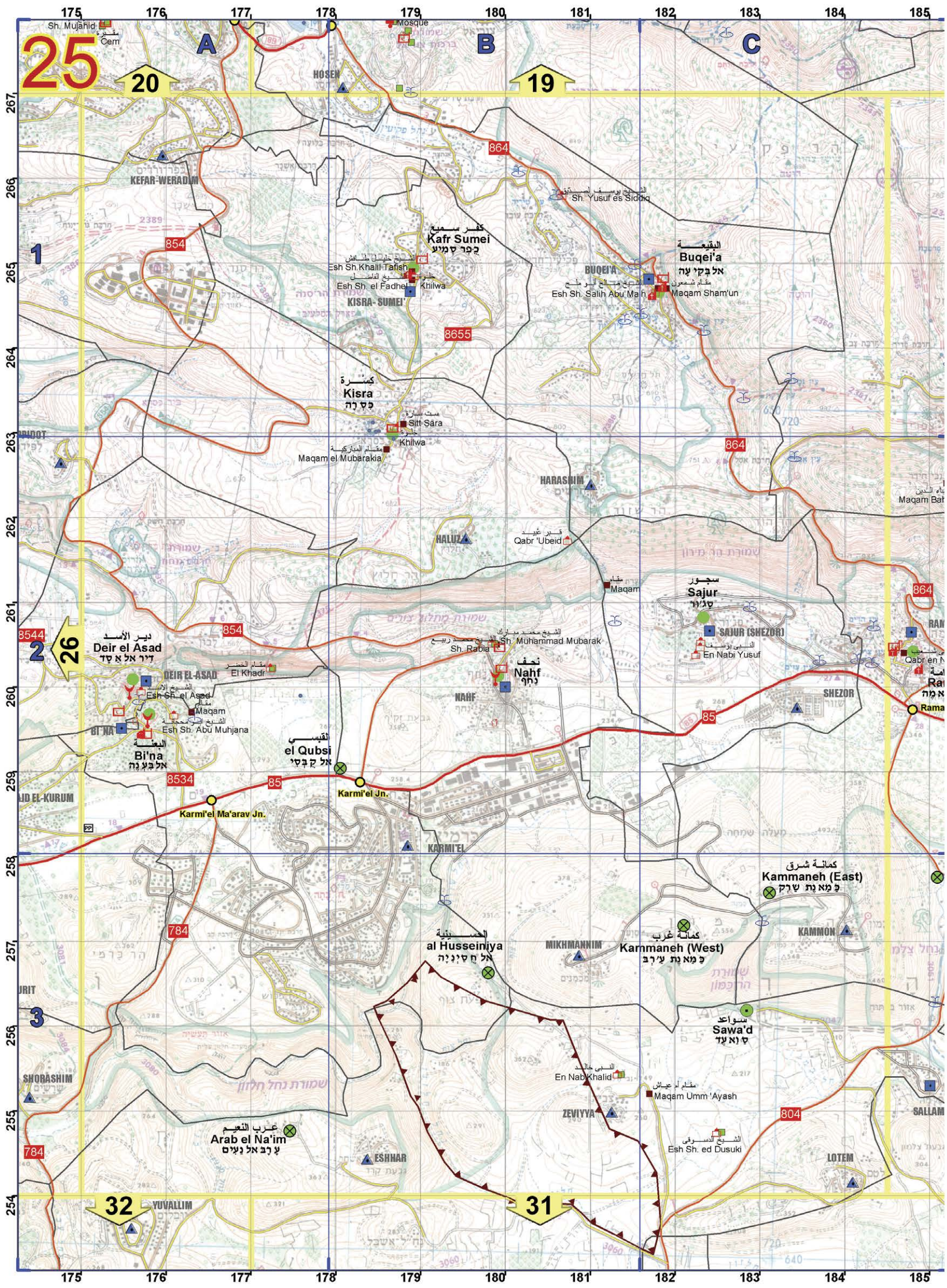
Esh Sh. 'Ali el Akbarawi

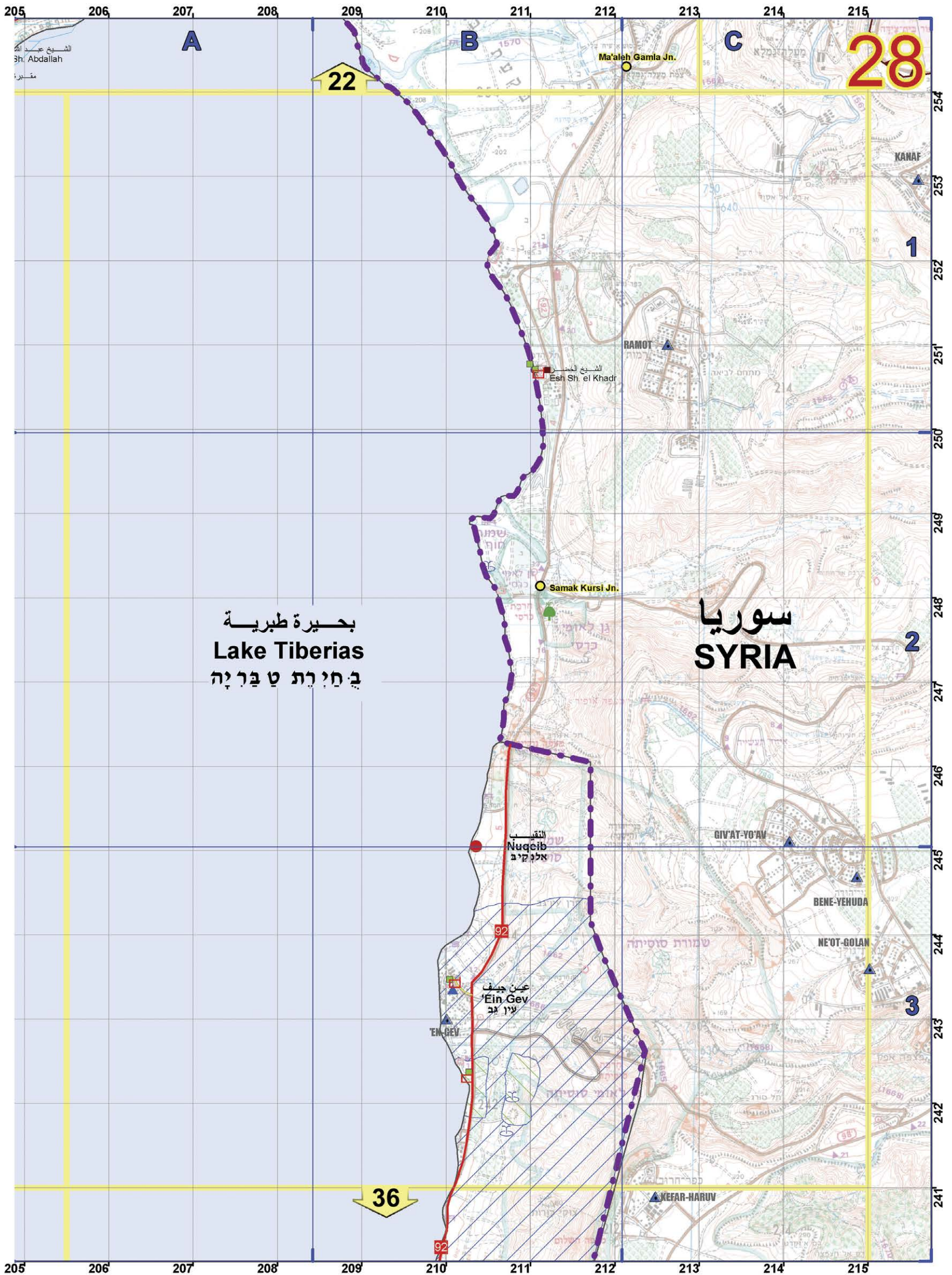
Esh Sh. Husein

Esh Sh. Salama

267
266
265
264
263
262
261
260
259
258
257
256
255
254

194 195 196 197 198 199 200 201 202 203 204





بحيرة طبرية
Lake Tiberias
בַּחִירַת טַבְרִיָּה

سوريا
SYRIA

28

1

2

3

22

36

الشيخ عبد الله
Sh. Abdallah
مقبرة

Ma'aleh Gamla Jn.

الشيخ الخضر
Esh Sh. el Khadr

Samak Kursi Jn.

النقيب
Nuqib
الملكيب

عين جيف
'Ein Gev
عين جب

KEFAR HARUV

GIV'AT-YO'AV

BENE-YEHUDA

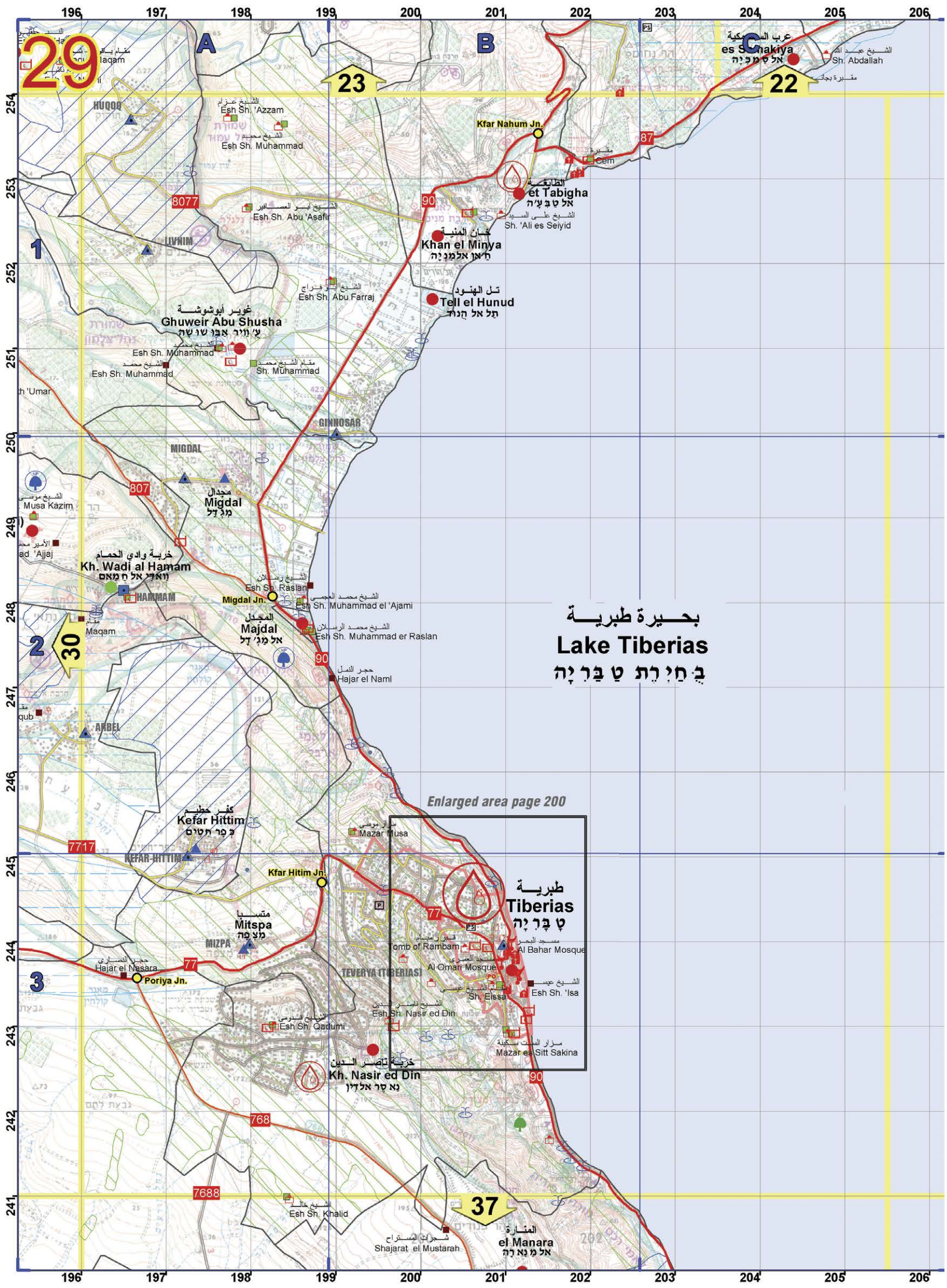
NE'OT-GOLAN

RAMOT

KANAF

205 206 207 208 209 210 211 212 213 214 215

254
253
252
251
250
249
248
247
246
245
244
243
242
241



29

23

22

30

3

37

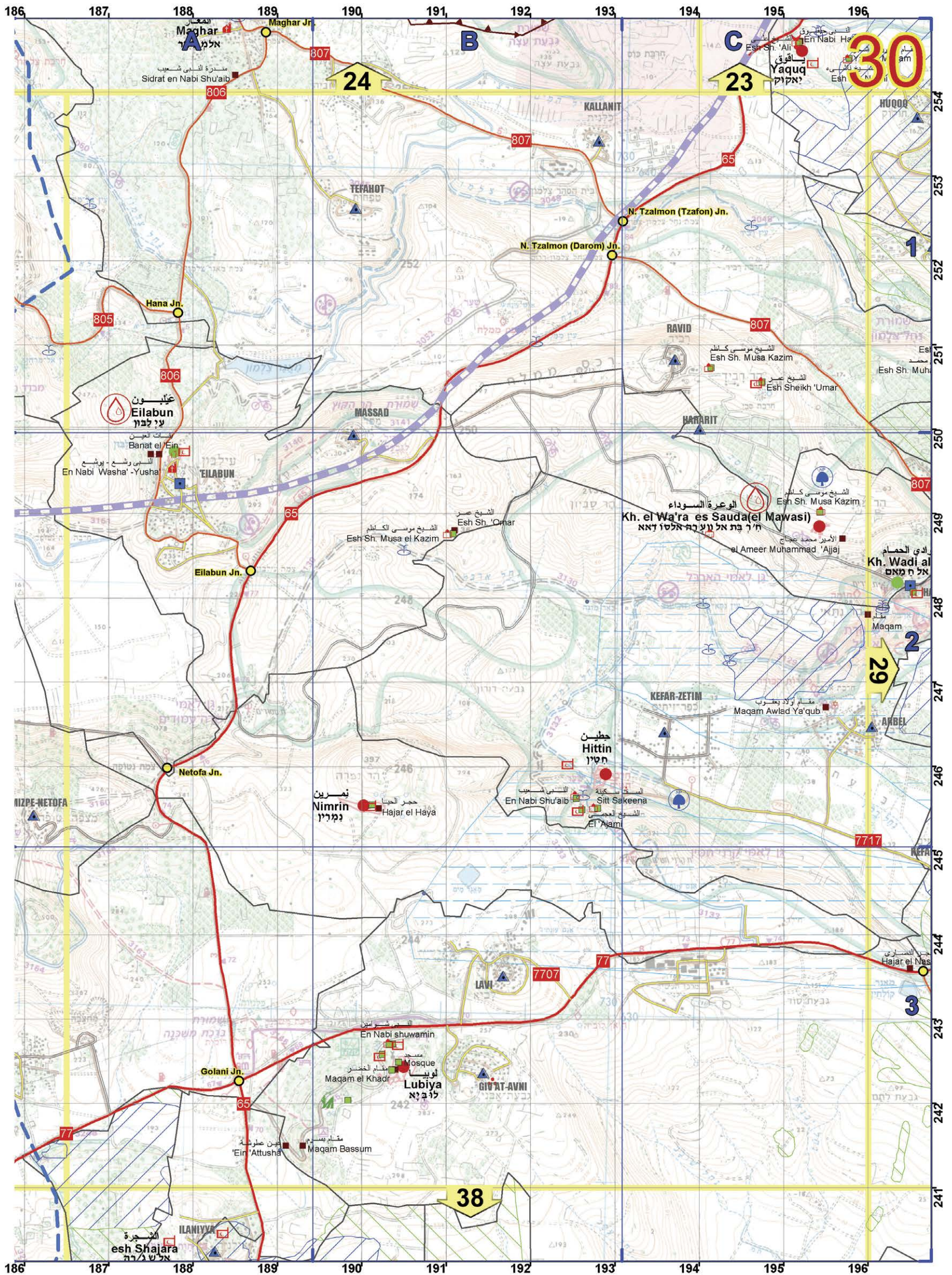
بحيرة طبرية
Lake Tiberias
 בַּחִירַת טַבְרִיָּה

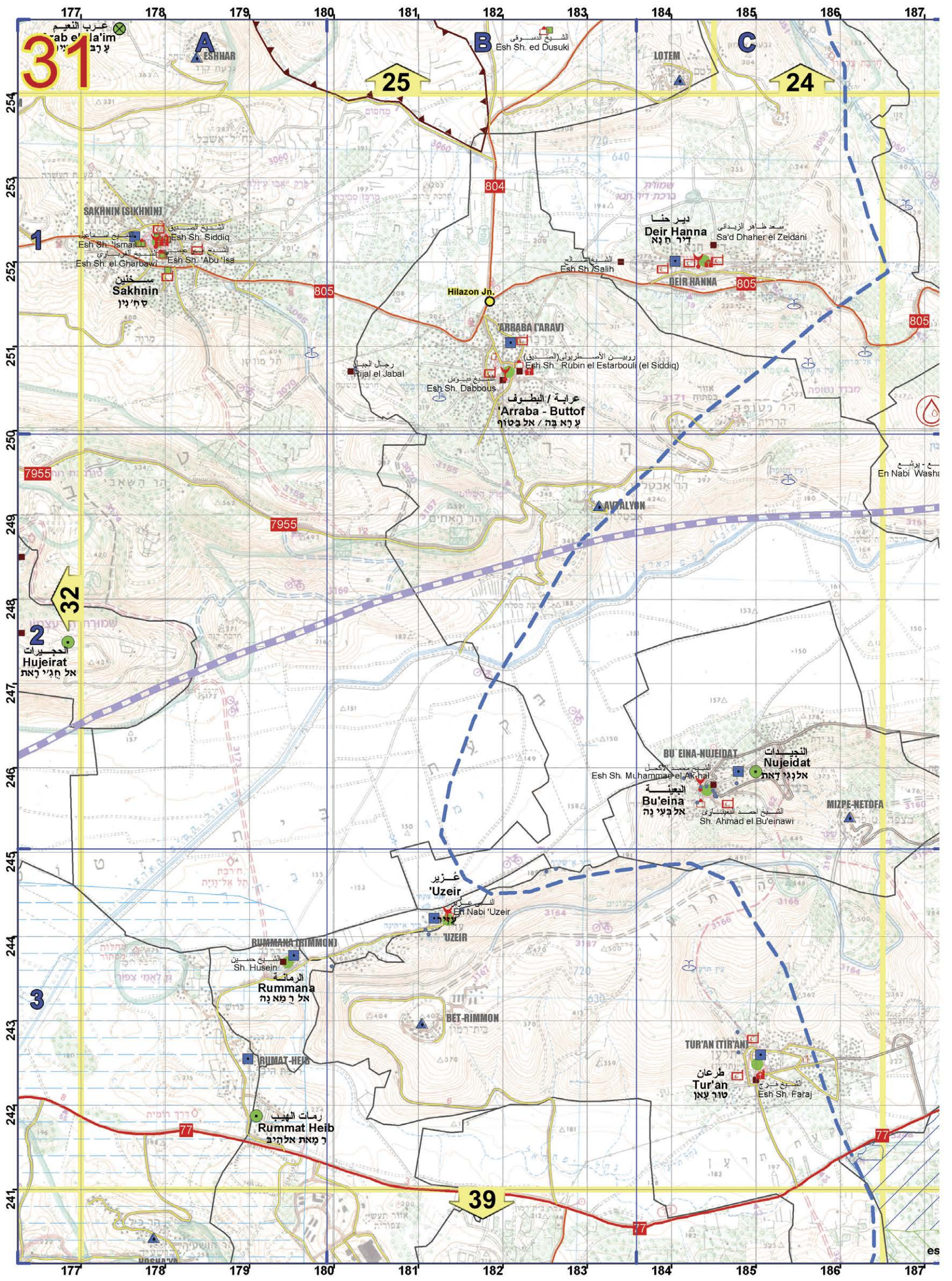
Enlarged area page 200

طبرية
Tiberias
 טַבְרִיָּה

خربة ناصر الدين
 خربة ناصر الدين
 נַחַשׁר אַלדִּין

العنارة
 el Manara
 אֵל מַנָּרָה





31

25

24

32

3

39

177 178 179 180 181 182 183 184 185 186 187

254 253 252 251 250 249 248 247 246 245 244 243 242 241

ESHNAR

ESH SH. ed Dusuki

LOTEN

SAKHNIN (SIKHNIN)

Esh Sh. Ismail

Esh Sh. Siddiq

Esh Sh. el Gharbawi

Esh Sh. Abu'Isa

Sakhnin

Sakhnin

Hilazon Jn.

ARRABA ('ARAV)

Araba - Buttof

Esh Sh. Rubin el Estarbouli (el Siddiq)

Esh Sh. Dabbous

ARRABLYON

Deir Hanna

Deir Hanna

Sa'd Dhafer el Zeidani

En Nabi Wash

HUJEIRAT

Hujeirat

Hujeirat

BU'EINA-NUJEIDAT

Nujeidat

Bu'eina

Sh. Ahmad el Bu'einawi

MIZPE-NETOFA

'UZEIR

'Uzeir

En Nabi 'Uzeir

BUMMANA (RIMMON)

Rummana

Rummat Heib

Rummat Heib

BET-RIMMON

TUR'AN ETIR'AN

Tur'an

Esh Sh. Faraj

